

# The development of the e-Infrastructure landscape in The Netherlands



WHAT COLLABORATION CAN DO FOR  
RESEARCH AND EDUCATION

Kees Neggers

e-IRG Workshop March 9, 2016 Amsterdam

# Summary

- e-Infrastructure governance is a complex matter
  - Many stakeholders
  - High upfront investments cost
  - Large spill-over effects
  - Dynamic nature and many interdependencies
- e-Infrastructure commons is an organisational rather than technical challenge
- No lack of vision, see: Riding the Wave (2010) GEANT2020 (2011) and the e-IRG 2013 White Paper
- Needed: leadership, coordination and collaboration

# Overview

- I will focus on the situation in The Netherlands
- Overview of NL's e-infrastructure landscape evolution
- Restructuring SURF
- Evaluation on where we stand now

# Landscape in the 60's and 70's

- Information monopoly for libraries
- Communication monopoly for analog telephone services
- Creation of computer centres
- Emerging Coordination

# Landscape in the 80's

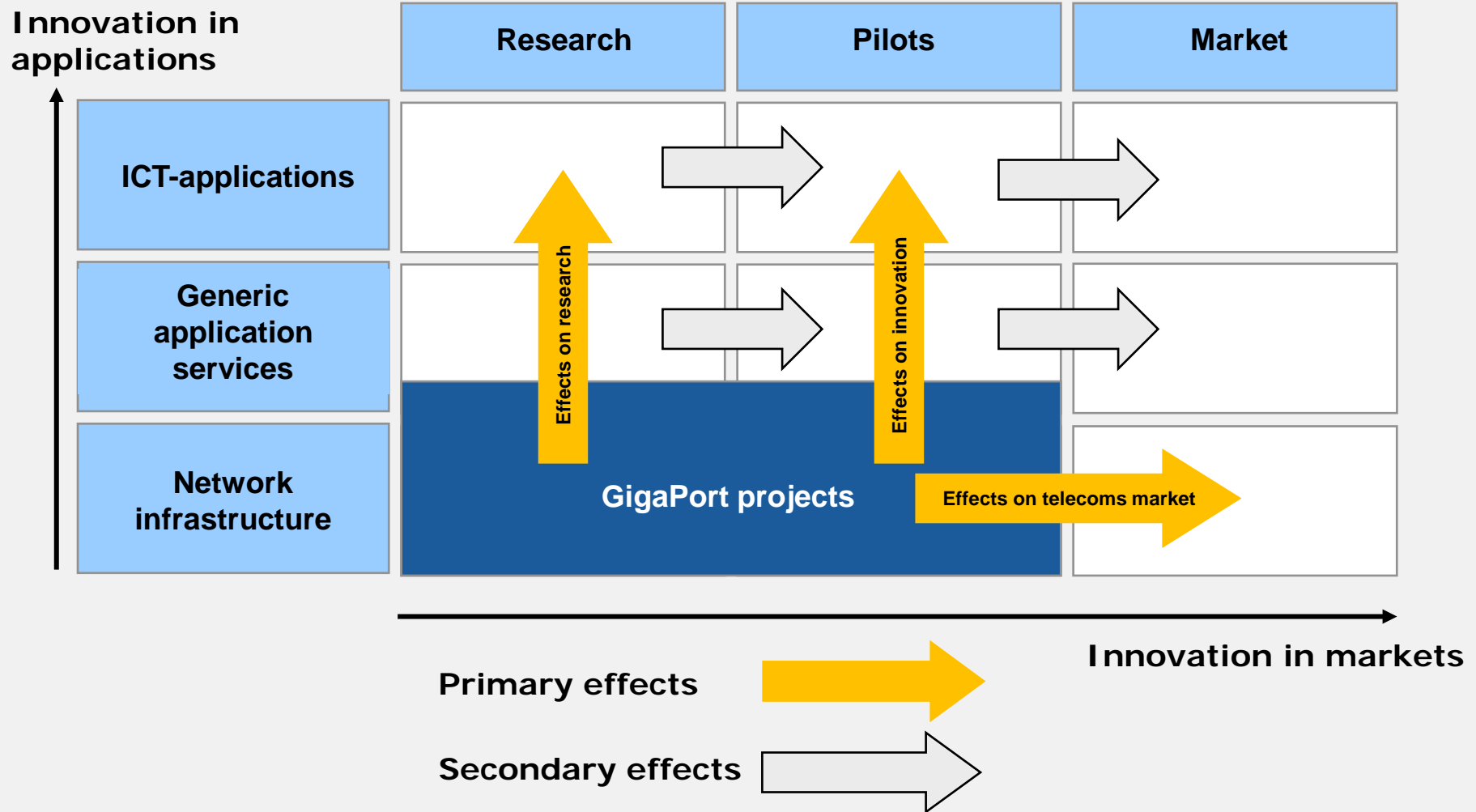
- Awareness of importance of IT
- 1984 Government Informatics Stimulation Plan
- Emerging Collaboration
- 1987 Formation of SURF

# Landscape in the 90's

- Awareness of essential role of IT for economy
- Creation of NCF, National Computer Facility
- 1997 Parliament motion to fund Knowledge Infrastructure programmes
- Dot-com boom



# The GigaPort projects: engines for innovation



# Landscape in the 00's

- Dot-com crash
- 2005 DANS, 2008 3TU-Datacentrum
- 2008 ICTRegie recommendations
  - Leading role for SURF
  - Structural funding for national e-infrastructure
  - Create e-Science Center
  - Develop key position in international cooperation



# Landscape in the 10's

- Economic crises
- 2011 Creation of NL e-Science Center,  
Termination of NCF
- 2013 Merger SURF and SARA  
RDNL, Research Data Netherlands
- 2014 Restructuring SURF

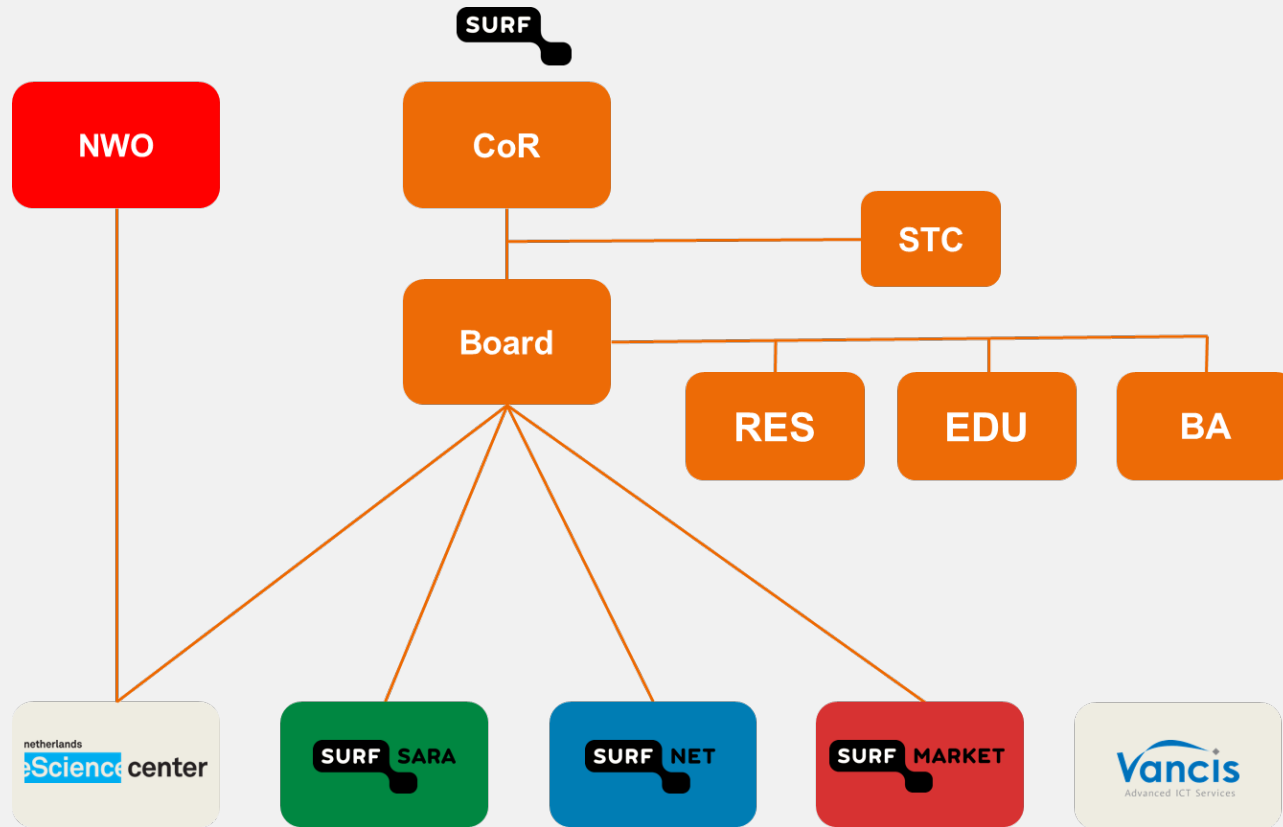
# SURF Cooperative

*Vergeet niet  
ook thuis wat  
leuks te doen*

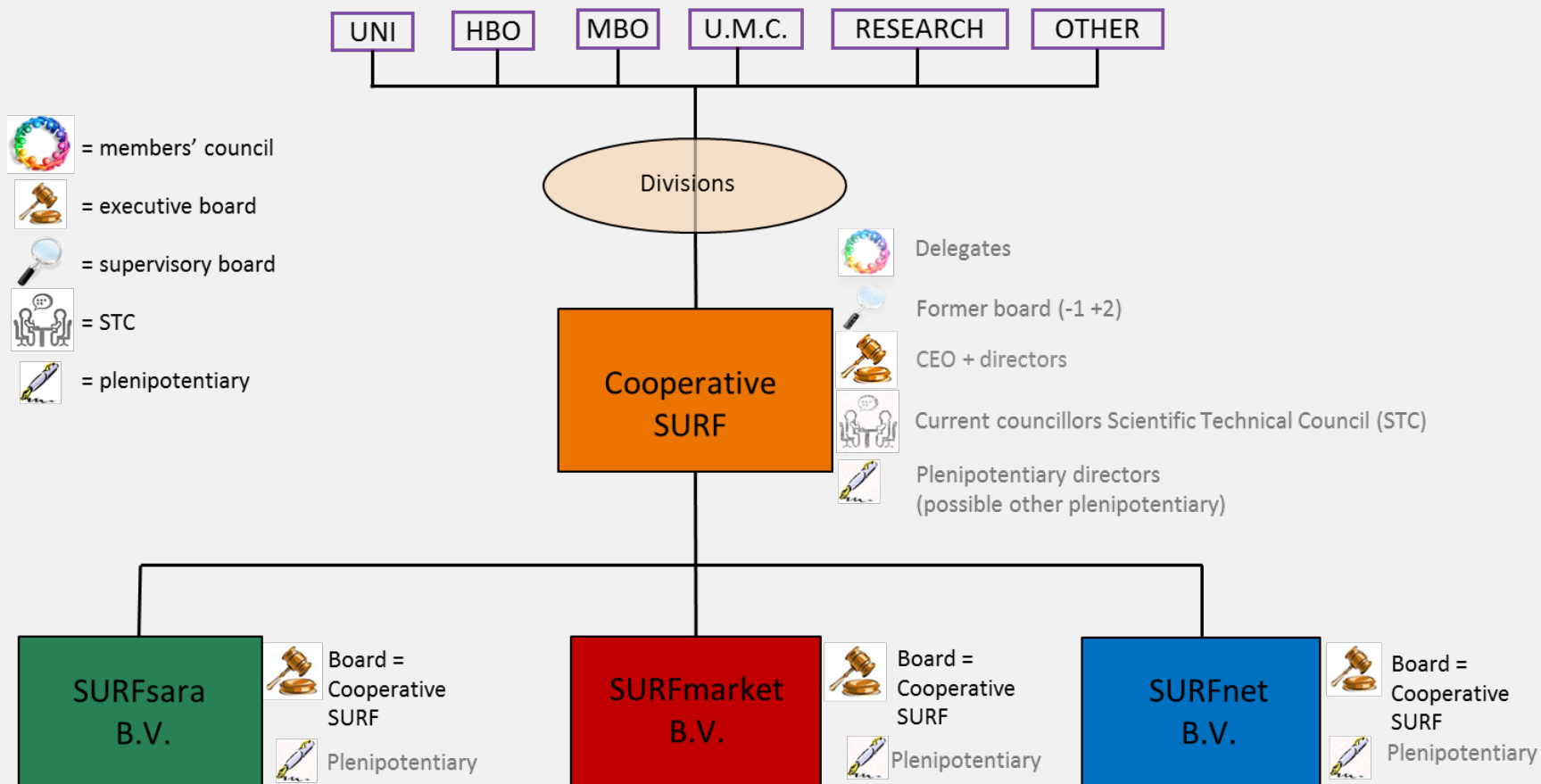
- SURF-bureau acts as holding organisation
- Continue model of insourcing
- Services and innovation programmes are carried out by the operating companies
- Core business = providing a national advanced and federated e-infrastructure for research and education



# Old organisation structure

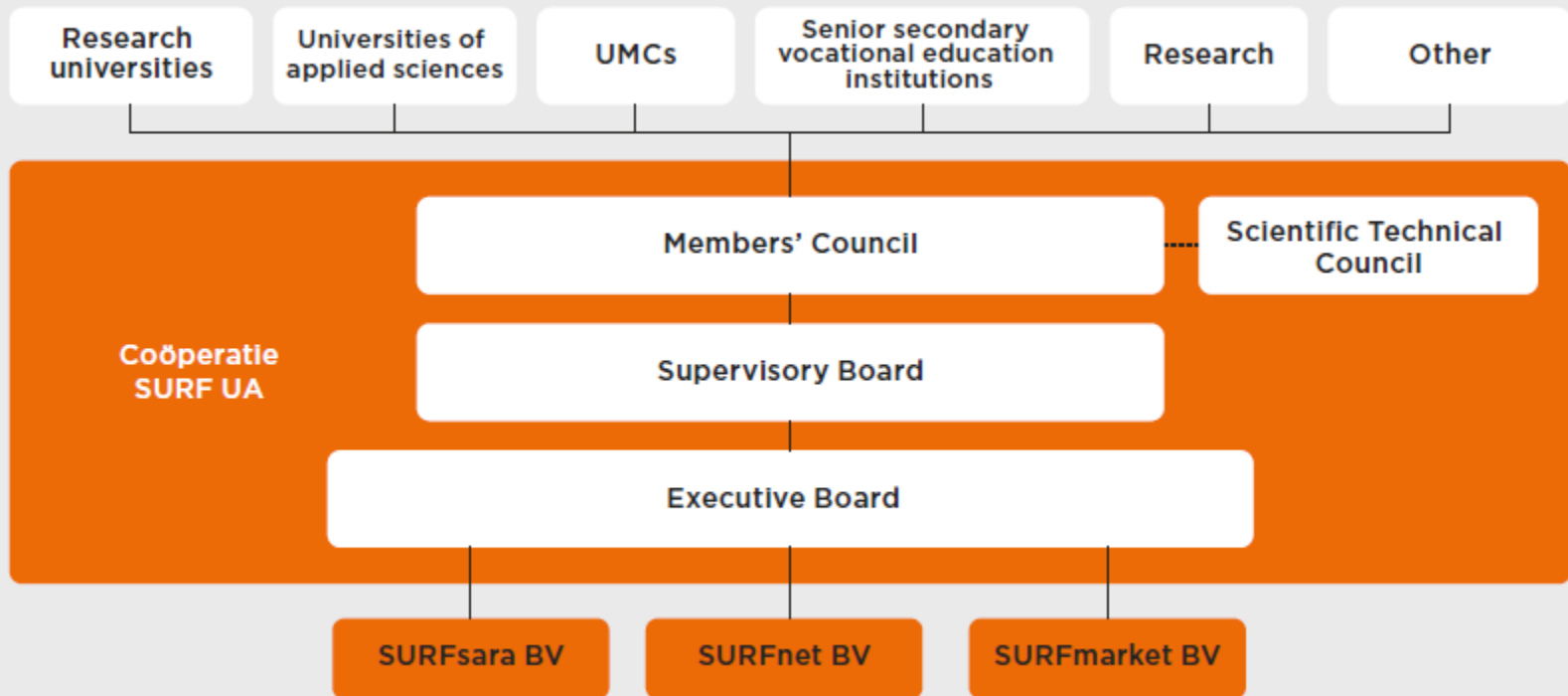


# New governance structure



# New organisation structure as of 28 January 2015: SURF as cooperative

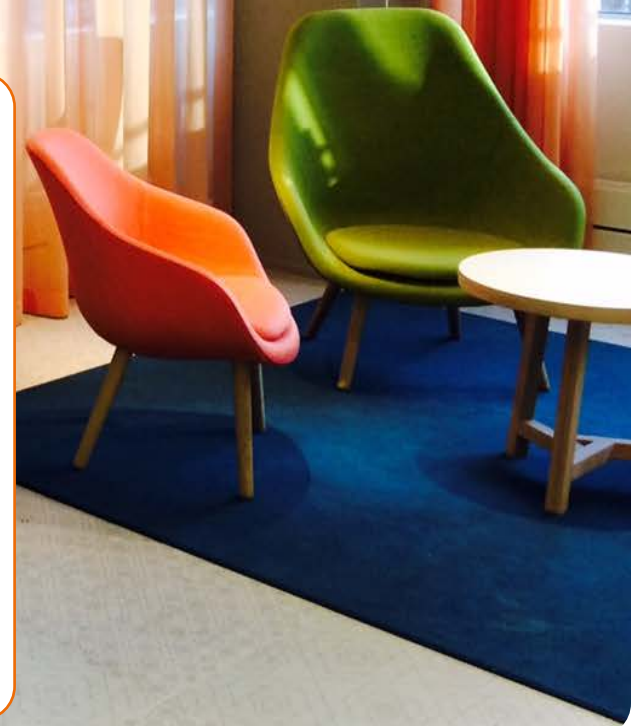
## Divisions



## SURF 2.0

*Vergeet niet  
ook thuis wat  
leuks te doen*

- More transparent and streamlined governance structure
- Increased sense of ownership and control for member institutions
- Better fitted for insourcing
- Reinforced managerial involvement
- Core business remains providing a national infrastructure for research and education



# Financing policy for the e-infrastructures

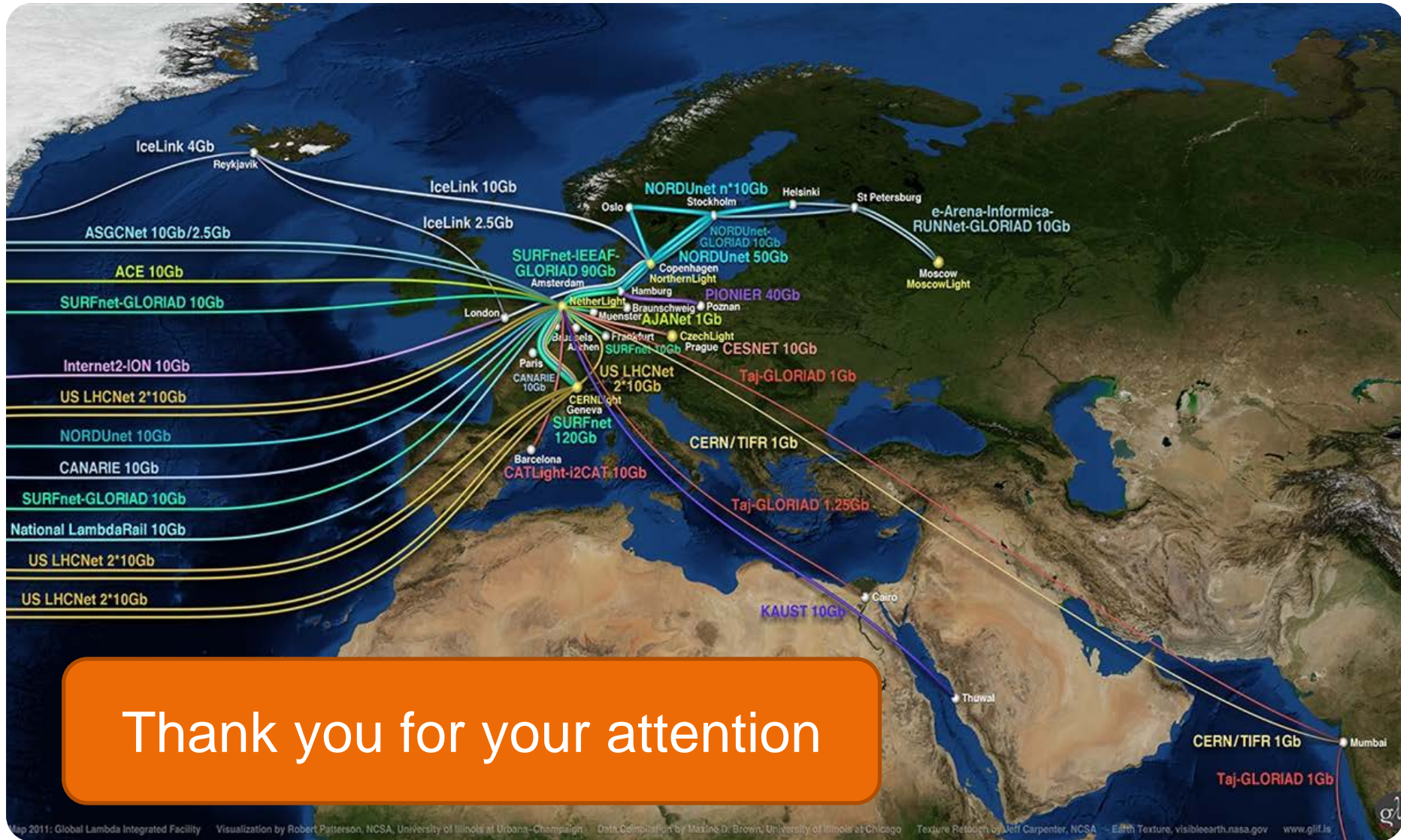
- Cooperation from contribution member institutions
- Innovation funding from government and institutions
- Services paid by users
- NLeSC: Funded by SURF and NWO

# Status NL e-infrastructure commons

- In good shape, but still work in progress:
- Improve involvement of all stakeholders
- Speak with one voice towards funders
- Strengthen role SURF as national umbrella
- Enable users to play a more prominent role



# NL: Digital gateway to Europa



Thank you for your attention