

GEDE & e-Infrastructures from the point of view of environmental RIs

*Maggie Hellström,
ICOS & ENVRIplus*

GEDE & e-IRG workshop

Bratislava, The Slovak Republic

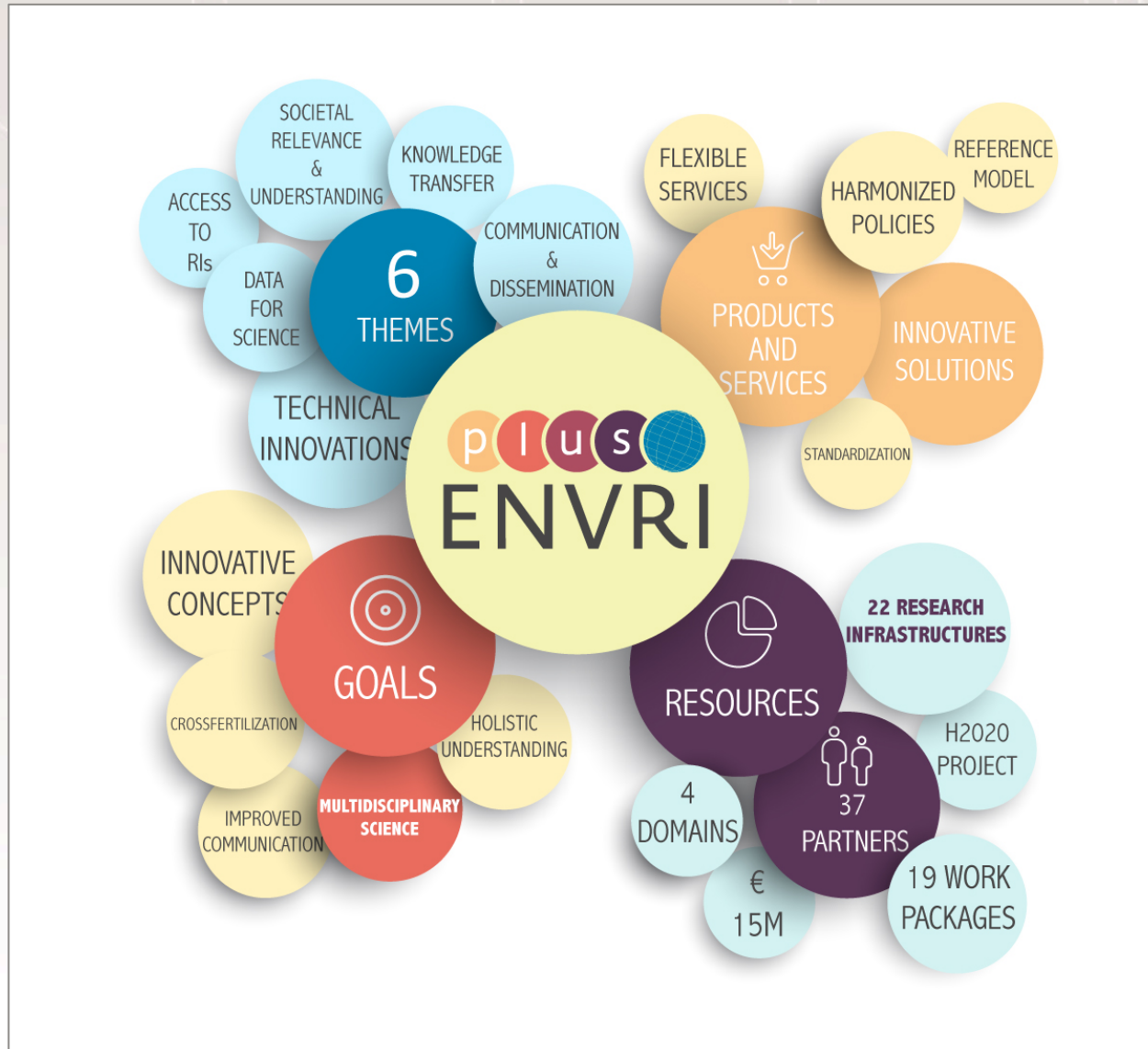
November 15, 2016



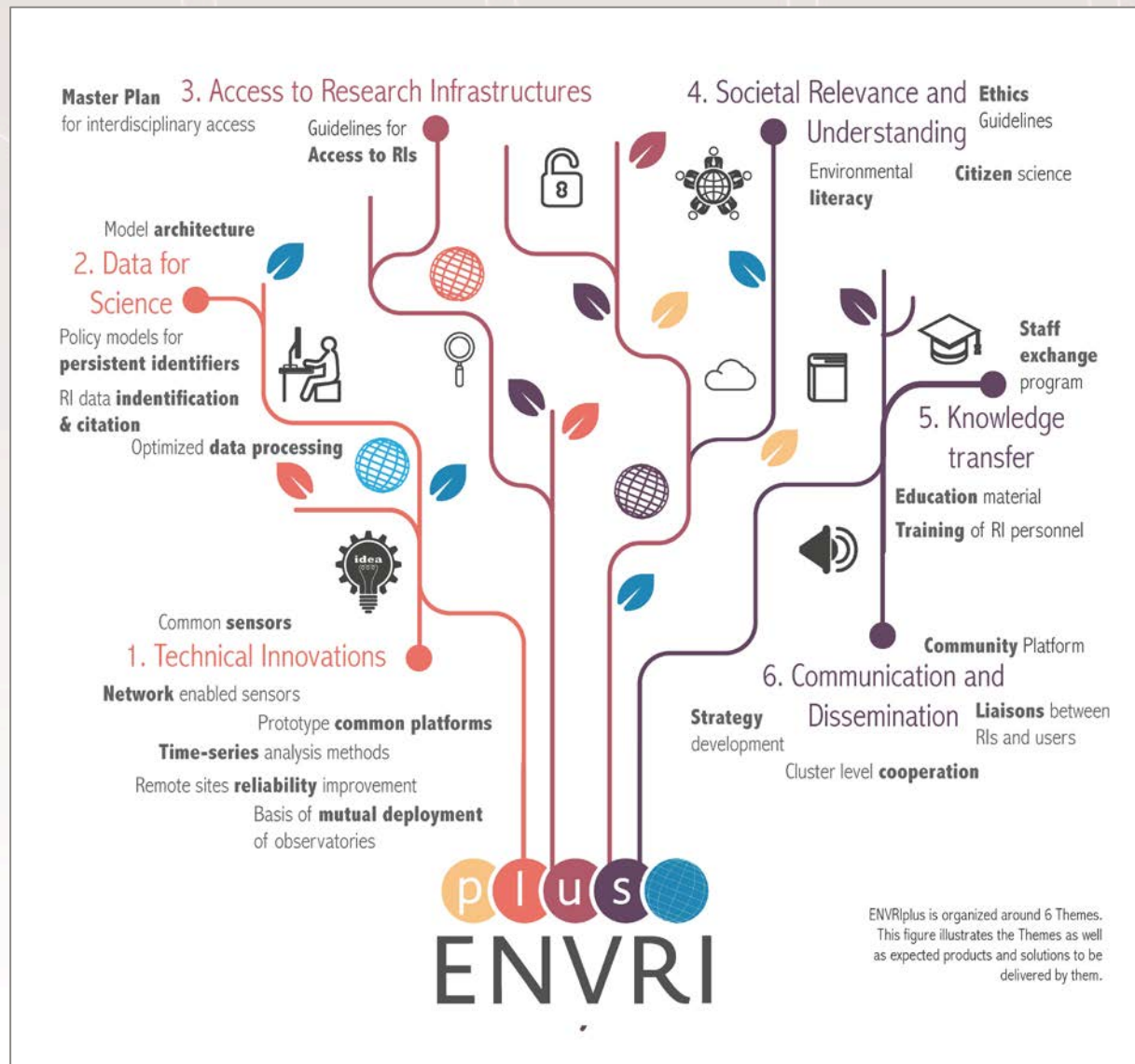
Environmental Research
Infrastructures Providing Shared
Solutions for Science and Society

ENVRiplus in a nutshell

May 2015
to
April 2019



The ENVRIplus themes



We are involved in ENVRIplus!



Question 1

- Why is GEDE (and thus RDA) of interest for environmental RIs (like those in ENVRIplus), and what are the expectations?
- RDA gives us a possibility to gain from and test new advances; in its turn, ENVRIplus can suggest solutions which could be tested within the RDA to become Recommendations. RDA collaboration contributes to a global picture, and adds to the discussion on many environmental RI data issues. (Ari Asmi, ENVRIplus project manager)
- GEDE as a group provides direct contacts with European RIs, provides a meeting platform to map out commonalities and differences; it's a good idea to work together on recommendations for broader issues and provide a clearer picture to European and national service providers. (Maggie)



Examples of ENVRIplus usage of RDA outputs, connections to RDA

- Within ENVRIplus Theme 2 (Data for Science), we are making use of several RDA recommendations and outputs
- Many ENVRIplus researchers are members of RDA
- ENVRIplus is represented in GEDE both as itself, and by member RI representatives from ACTRIS, AnaEE, EISCAT-3D, ELIXIR, eLTER, EMBRC, ENES, Euro-ARGO, IAGOS, ICOS and SIOS



Question 2

- **What are the expectations of environmental RIs (like ICOS and others in ENVRIplus) with respect to e-Infrastructures, e.g. what could these help with, and what not?**
- They could help in many of the technical services, especially when considering tailoring their general services towards specific domain needs. But they should not try to force the environmental RIs to change their systems to fit their general services. (Ari)
- RIs typically start as bottom-up science projects, planned with little ICT or data science input. More consultancy & involvement on technical design is welcome, both in planning of new RIs and in consolidating existing ones. But a “sales pitch” approach confuses more than it helps. (Maggie)



Examples of e-Infra services used by ENVRIplus members

EGI

- Federated cloud for High-Throughput Computing
- Data Hub for data sharing
- Support for Virtual Research Environment deployment

EUDAT

- B2 services for storage & staging
- AAI, annotation, PID minting
- Expert consultancy

PRACE

- High-Performance Computing resource
- HPC expertise



My own summarizing thoughts

- RIs and e-Infras: dialog is starting
- But: building long-lasting relationships take time...
- We need to break down the “us and them”!
- Not just the RIs that need training...
- A lot of know-how is available in the RIs – use it!
- Huge diversity in the (ESF)RI landscape – no “one size fits all”
- RIs look for sustainability and long(er)-term commitments
- e-Services must be clearly defined and documented
- Also need for clear cost models & time frames



Thank you!

- ENVRIplus

 - <http://envriplus.eu>

 - ENVRIplus-coordination@helsinki.fi

- ICOS

 - <https://icos-ri.eu>

 - icos-admin@helsinki.fi

- Maggie

 - <https://icos-cp.eu>

 - margareta.hellstrom@nateko.lu.se

