

# **e-IRG Blue Paper on Data Management**

## **Policy Implication for Large-Scale RI Initiatives**

**Sverker Holmgren**

**e-IRG Chair**

**Bjørn Henrichsen**

**Norwegian ESFRI Delegate**

# e-IRG Blue Papers

- 2010 Blue Paper on e-Infrastructure
  - How large-scale projects (e.g. ESFRIs) and their users can engage and exploit common e-infrastructure
- 2012 Blue Paper on Data Management
  - Cross cutting themes for all research infrastructures related to data management

<http://www.e-irg.eu/publications/blue-papers.html>

# Need for Sustainable e-Infrastructures

All RI's need to establish sustainable e-Infrastructure for;

- enabling access to data;
- storing data;
- preserving data;
- curating data.

# Need for Actions

Needed action from policy makers;

- Roles are clearly defined between different actors (e.g. users, data owners and infrastructure providers are identified and cooperation established to fulfill the needs of the end users and data owners).
- Governance and mandates for different actions are clarified and their way of interacting is sufficiently formalized.
- Cost for different services and procedures are made transparent.

**Why is This Important for ESFRI (and other large-scale RIs)?**

# Today

48 Research Infrastructures either implemented or still on the Roadmap.



And how do we avoid that we are establishing 48 new “infrastructure isles”?

# Cluster Projects

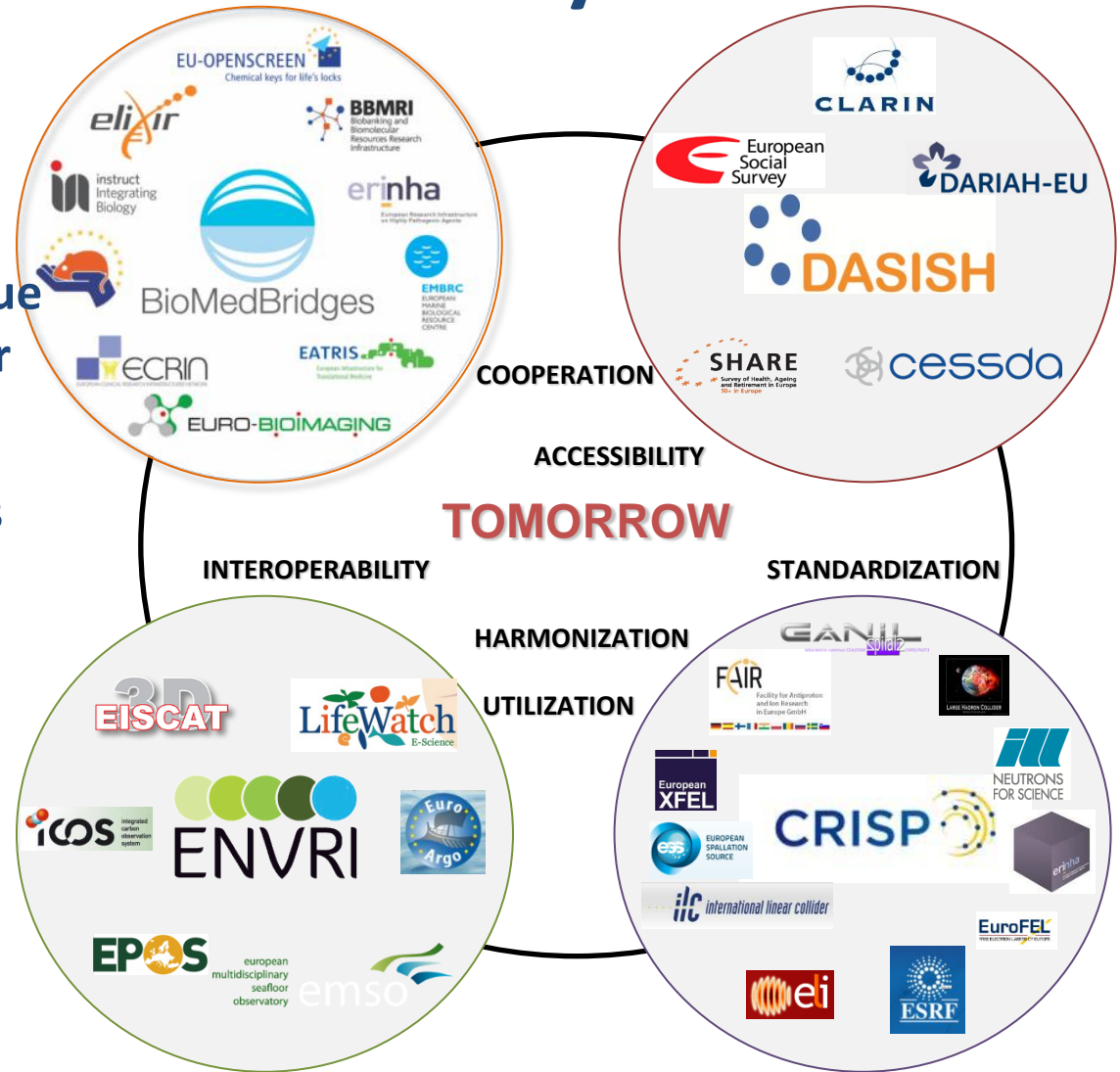
- **BIOMEDBRIDGES** – Building Data Bridges between Biological and Medical Infrastructures in Europe
- **DASISH** - Data Service Infrastructure for the Social Sciences and Humanities
- **ENVRI** – Common Operations of Environmental Research Infrastructures
- **CRISP** – Cluster of Research Infrastructures for Synergies in Physics



# Towards an Infrastructural System

## The way forward?

- Recommend to the Commission to continue the work of the cluster projects
- Propose that activities are coordinated between the cluster projects

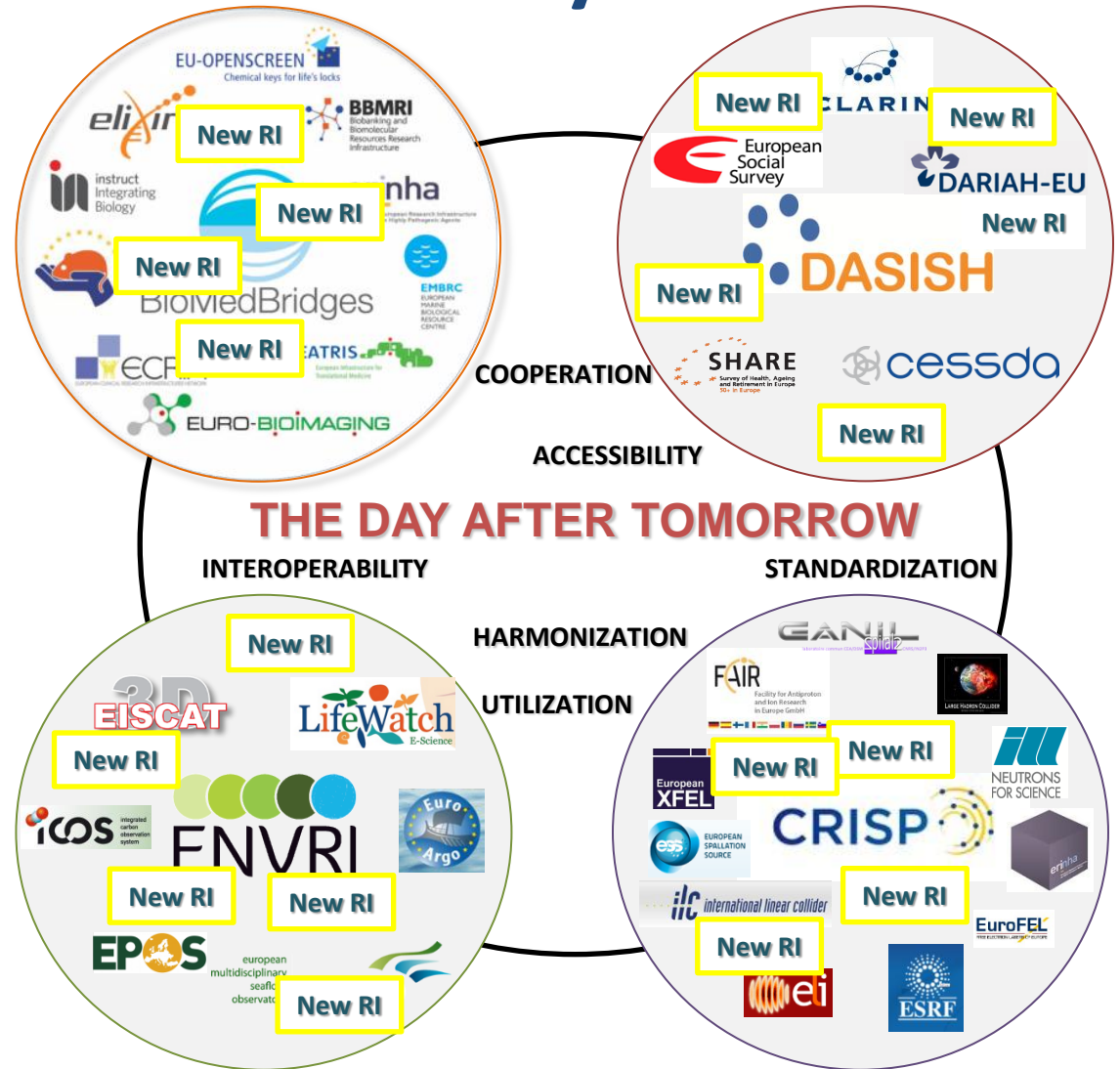




# Towards an Infrastructural System

## What about

- Leadership?
- Links to ESFRI and the Commission?
- Contact with the scientific community?



# Proposal to ESFRI

- Give general advices both to national funders as well as to the Commission concerning the need for further coordination of data infrastructure facilities (both economic and scientific reasons)
- Ask e-IRG to play an even more active role in organizing and give advices based on the new initiatives coming from different bodies

# e-IRG & ESFRI

- A closer cooperation between e-IRG and ESFRI is in line with EC Communication adopted on 17<sup>th</sup> July 2012.
- E.g.

*“Develop in cooperation with ESFRI, e-IRG and other stakeholders a Charter of Access setting out common standards and harmonized access rules and conditions for the use of RI’s”*