

From Closed Networks to Open Data

“Musings from an NREN point of view”

SWITCH

Christoph Witzig

Christoph.witzig@switch.ch

e-IRG – CERN – May 21, 2019

Outline

- Glorious Past
 - “WOW – we did all that!”
- Messy Present
 - “Ups – this is harder than we thought”
- Bright Future
 - “It gonna be so cool - data to infinity and beyond”

Mission



SWITCH is an **integral part of the Swiss academic community.**

Based on our **core competencies**

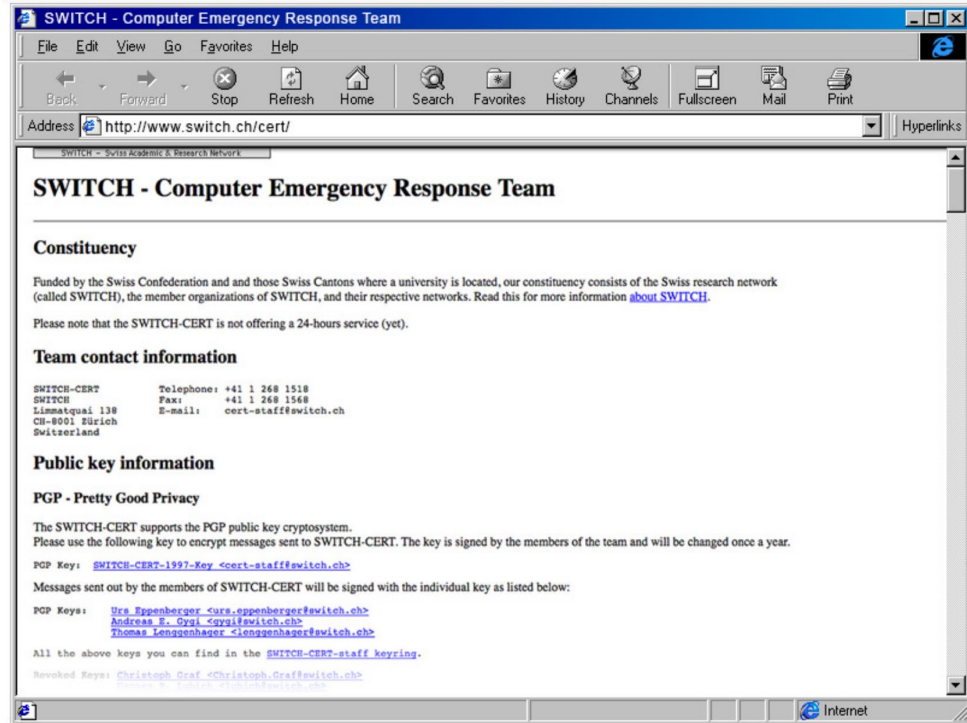
- Network
- Security
- Identity Management

SWITCH offers collaboratively developed ICT solutions that empower users in and beyond the academic world to achieve leading edge results in a globally competitive environment.

1994 Specialist Department for Security

1996 Foundation of SWITCH-CERT

1998 FIRST-Membership



Peter J. Gilli, then Managing Director of SWITCH, at his desk.

NREN



Trusted Collab

Registry



Trusted Collab

Banks



Trusted Collab

Industry



Trusted Collab

Energy

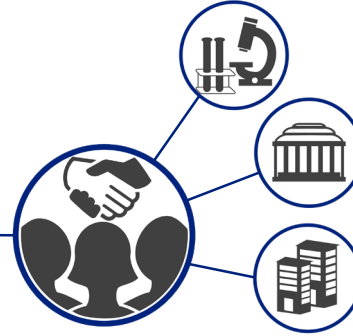


Trusted Collab

Information and Threat Intel Sharing & Collaboration**Incident Handling (Analysis & Coordination) & Critical Threat Alerting****Network
Security
Monitoring****Domain
Security****Malware
Monitoring &
Analysis****ICS/OT Security****IoT Security****Forensics, Awareness, Info Services, Community Services (Info Events,
Working Groups), CSIRT-Trainings, etc.****National & International Cooperation Network**

Added value for customers

Community Work



Foundation



Integrated Offer



Outline

- Glorious Past
- Messy Present
 - “Ups – this is harder than we thought”
- Bright Future

Two “simple” questions

1. **Which services** should we offer **to whom** and **how**?
2. How do we make these services **sustainable** ?

Procurement and Legal

- Framework contracts for academic sector
 - Major vendors; collaboration with NRENs/countries needed
 - Licensing issues
- Legal activities
 - Starting with an ICT Law Working Group
 - Extending to legal consulting
- Concept of SWITCHhub

Procurement and Legal

- Framework contracts for academic sector
 - Major vendors; collaboration with NRENs/countries needed
 - Licensing issues
- Legal activities
 - Starting with an ICT Law Working Group
 - Extending to legal consulting
- Concept of SWITCHhub



Cross-sector activity

Infrastructure and Data

Openstack and Ceph

- Offering: VM, Storage, GPU, Containers

Positioning

- Expansion of local infrastructure under maximum consideration of institutional needs
- Data location SWITCH

Zurich University of the Arts, Toni Areal

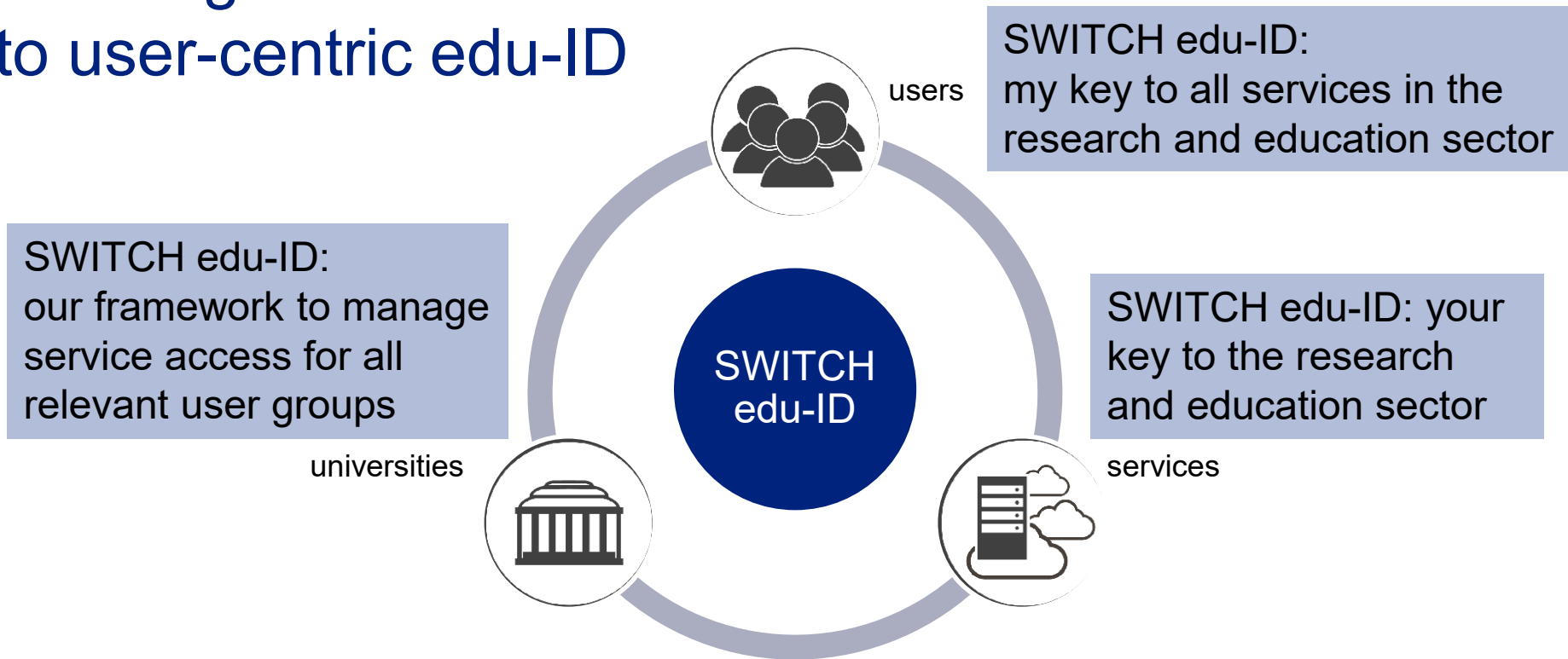


Université de Lausanne, Géopolis



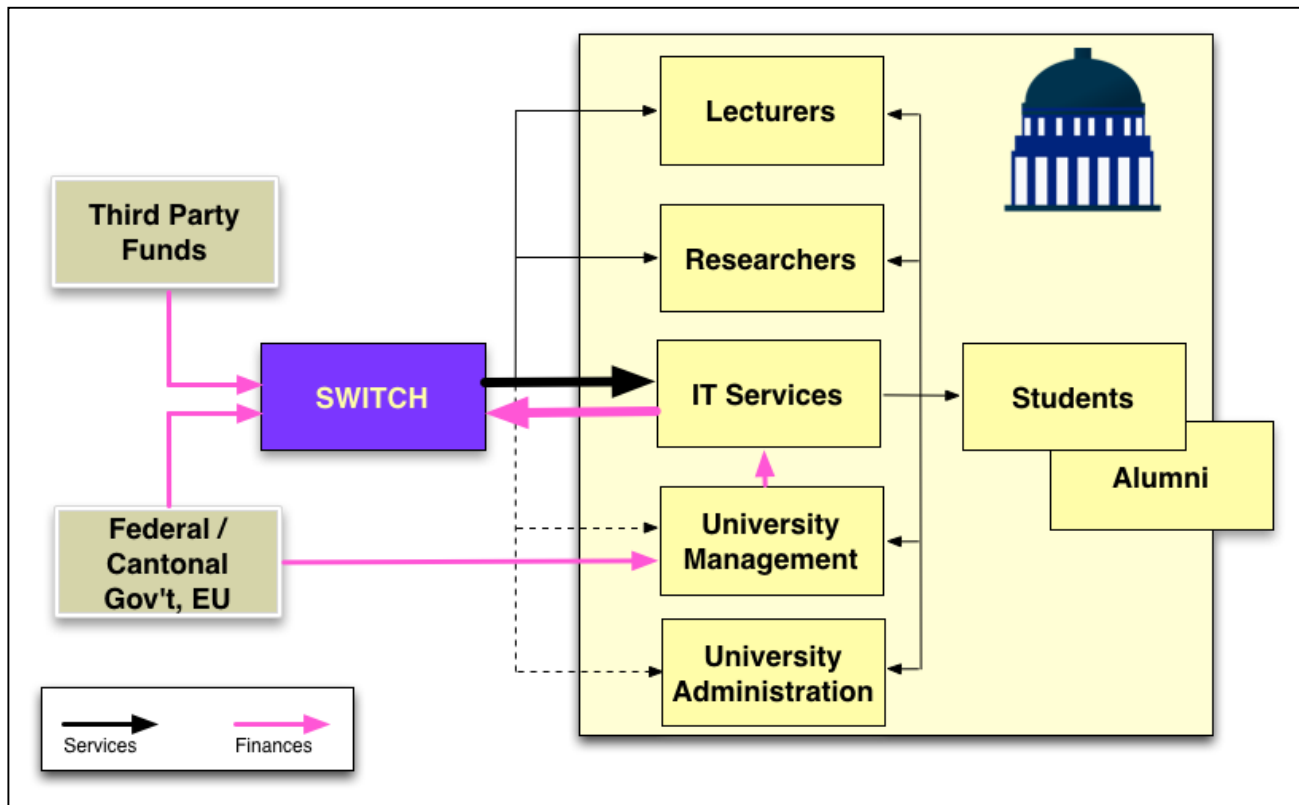
Photo Fabrice Ducrest © UNIL

Migrating from organization-centric AAI to user-centric edu-ID

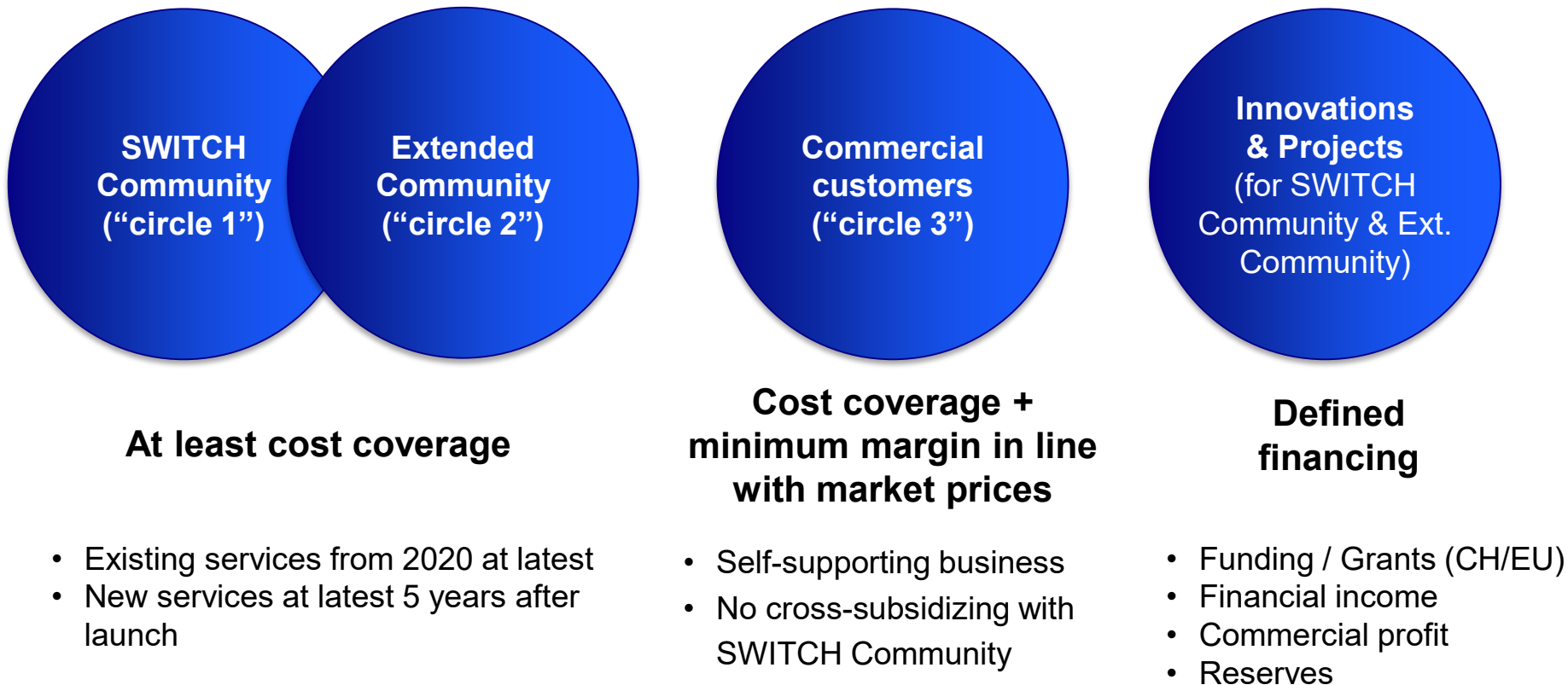


<https://www.switch.ch/edu-id/>

SWITCH Business Model



Financing Principles adopted in 2016



Outline

- Glorious Past
- Messy Present
- Bright Future
 - “It gonna be so cool - data to infinity and beyond”

Simple questions (cont.)

If SWITCH were be founded today, what would its missions be?

Situation in Switzerland today

- Funding agencies demand now data management plans
- Open access initiative – initiated by swissuniversities
- Various efforts on establishing/developing data repositories
- Open science a main thrust in the next 4 year federal budget cycle 2021 – 2024
- Situation vary significantly between different institutions

Data Repositories in Switzerland

- 1/3 of Swiss research community share data in repositories
- Pronounced fragmentation of repositories in use
 - 149 different repositories mentioned
 - top 7 : GitHub, Zenodo, FORSbase, GEO, OSF, DRYAD, figshare
 - Accept many repositories, but concentrate on quality criteria for them (?)
- SNF decided to contribute to the funding of national repositories in the future (but not to operate them itself)

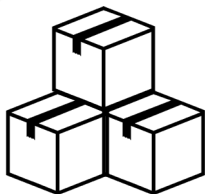
Some observations

- Many players – many different viewpoints
→ many different visions
- Different institutions and different scientific communities have different needs and different strategies
- Open Science must primarily driven by the science (not by infrastructure providers)
- Consider open science as a gigantic puzzle – with many missing and ill-formed pieces that need to be fit together

Puzzle stones – with relevance for SWITCH

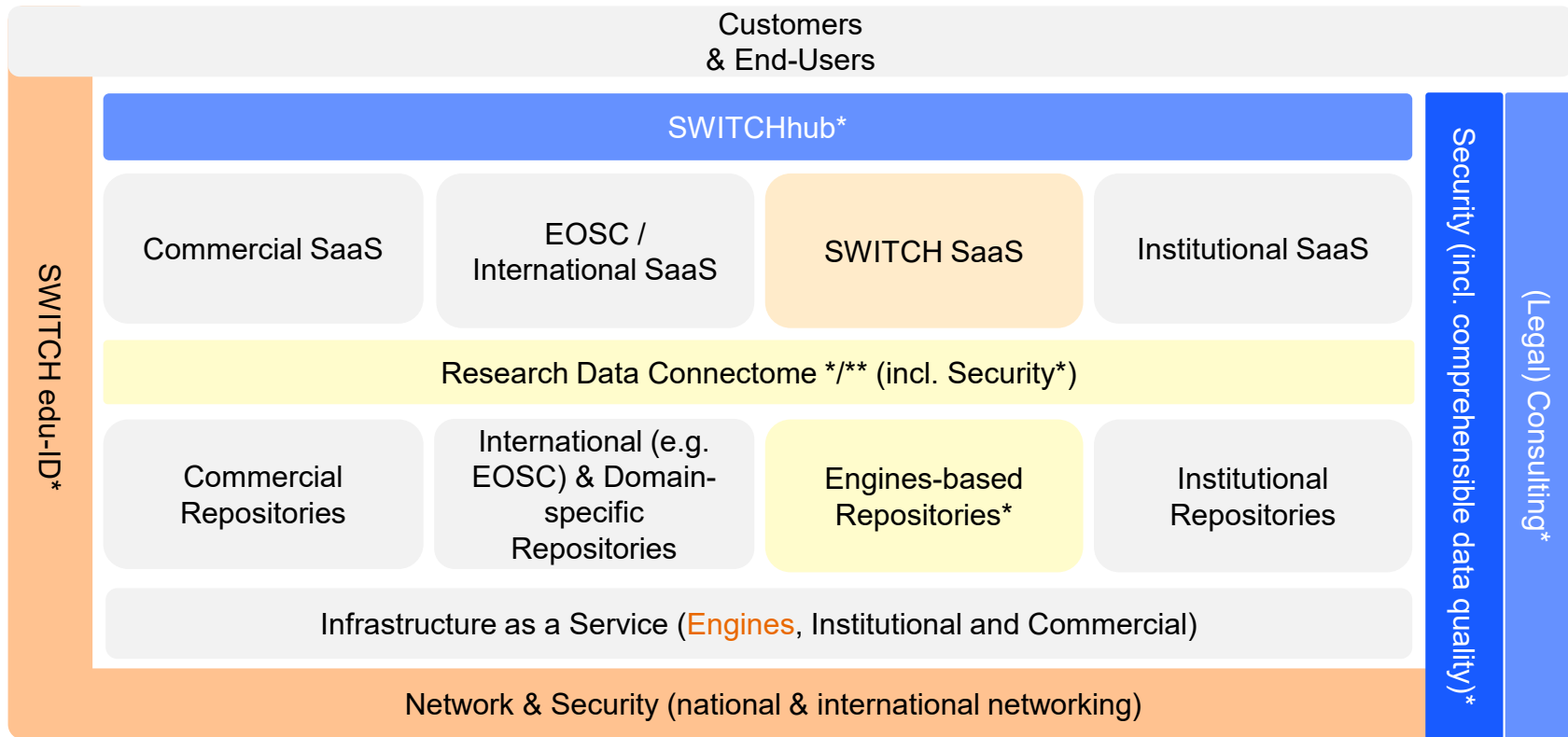
- New services are important puzzle pieces
 - Technical: Edu-ID – Engines - security
 - Organizational: Hub – information security – data quality
 - Legal
- Positioning of “data location SWITCH”

SWITCH Long Term Storage

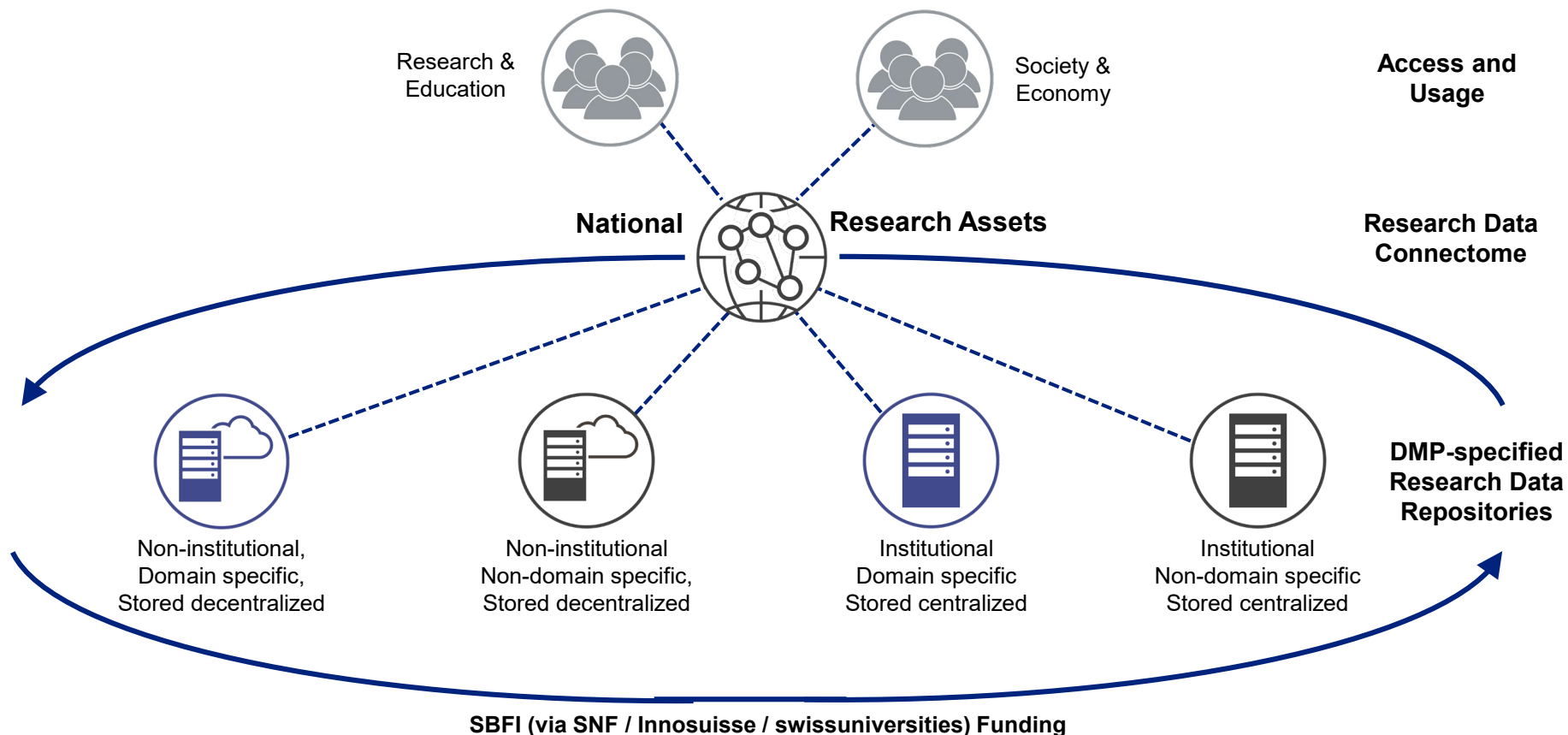


- Store data that is needed for long periods
 - Reproducibility after several years e.g. FAIR
 - Funding body or regulatory need
- Store data that is less intensively used
 - Results from previous projects
 - 5-10 years of backups of generic data
- Store large quantities of data
 - Write over read

Overview Positioning



Vision «Research Data Connectome»



Outline

- Glorious Past
- Messy Present
 - Established services must be adapted to new requirements
 - New services must be developed to meet future needs
- Bright Future
 - Open science as a gigantic puzzle – with many missing and ill-formed pieces that need to be fit together
 - Must be driven by science – not infrastructure providers